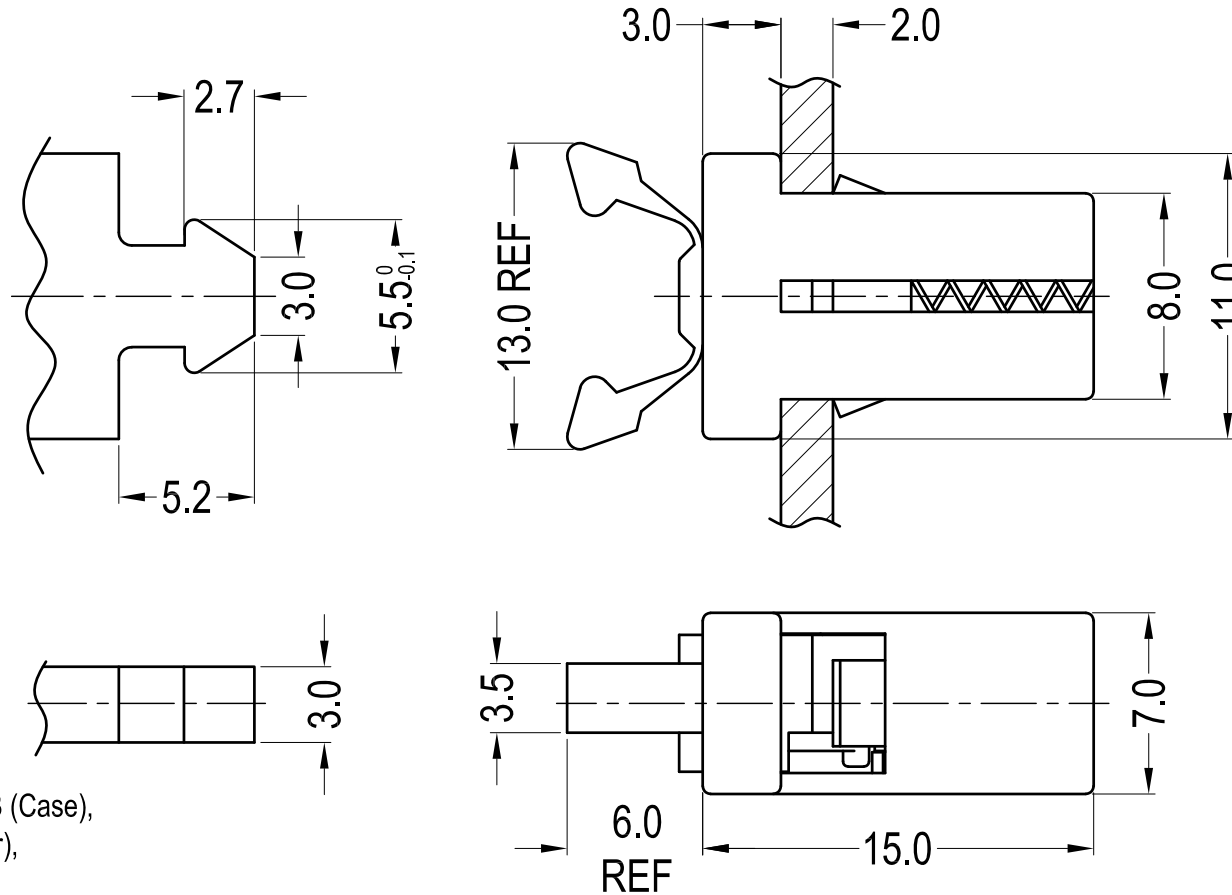


REV	DESCRIPTION	DATE	CHECK
A1	Add "G" to the original Article No. .	2025-10-16	FDL
A2	Add GDL-1-1300,GDL-1-Y GDL-1V0(LG),GDL-1-RAL7005.	2026-1-19	FDL



Body Locking Force:10N Max.		
Body Release Force:50N Min.		
Locking Stroke Force:5±2N		
Retention Force(Locked):20N Min.		
Locking Stroke:5.5mm		
Release Stroke:1.3mm		
Part No.	Article No.	Color
30125	GDL-1-B	Black
30299	GDL-1-G	Grey
30129	GDL-1-W	White
30124	GDL-1-1300	Black
30127	GDL-1-Y	Yellow
30128	GDL-1V0(LG)	Grey
30214	GDL-1-RAL7005	Grey

Notes:

1. Material: POM UL94 HB (Case),
PA66 UL94 V2 (Catcher),
PC+GF (Arm),
304 Stainless Steel (Spring);
2. Continuous Working Temperature:
-10°C to 70°C;
3. Storage Temperature: -40°C to 80°C;
4. Hole: $\square 7.0^{+0.2} \times \square 8.0^{+0.2}$,
Panel Thickness: $2.0^{0}_{-0.1}$;
5. Life Cycles:30000 operations;
6. RoHS Compliant.

Gecko International Co.						DATE	2026-1-19	DIMENSION	2026-1-19	TOLERANCE	±0.10
TITLE	DOOR LATCHES					SCALE	FIT	L ≤ 4		±0.10	
ARTICLE NO.	GDL-1	MOLD NO.	/	DRAW	LWJ	UNIT	MM	4 < L ≤ 15		±0.20	
PART NO.	SEE TABLE	MATERIAL	SEE NOTES	DESIGN	LWJ	VERSION	A2	15 < L ≤ 50		±0.30	
DWG NO.	E3077	COLOR	SEE TABLE	APPROVAL	FDL	VIEW		50 < L ≤ 100		±0.40	